



Can be specially bent upon request



PRODUCT BENEFITS

- Perfectly adaptable for high or overhead installations, or when the fall clearance is incompatible with a cable system
- VERSATILE:** ideal for working at a distance, or in association with a high weight block
- MODULAR:** various routes may be used, thanks to the switch which enables continuous movement
- SECURE:** reduced height of fall due to the system rigidity
- HANDY:** can be installed on the majority of the roofs, thanks to the AFX supports suitable for the rail system

Several possible uses



Lateral circulation

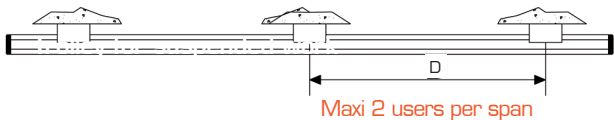


Circulation on the top of the rail



Overhead position

Recommendations of use



Fall arrest system only: **D = 4 meters**
Work in suspension: **D = 2 meters**

Rail runner with rollers

The mobile DELTA PLUS SYSTEMS runner is fitted with multiple rollers to provide perfect movement, whatever position is used. Is intended for intensive use.



RCF2

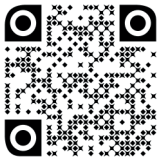
Runner dedicated to suspension use

The mobile DELTA PLUS SYSTEMS runner is made to roll under loads. It allows mobility when working in suspension.



RCF3

ONLINE TUTORIALS



For more information regarding the use or the installation of our ALTIRAIL rail system, please go to our YouTube channel and check out our online tutorials!

COMPONENTS ALTIRAIL®

Aluminium rail

Drilled and milled.
Available in 1, 1.5 and 3 meters.

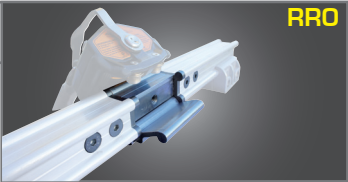
RRAIL



Entry/Exit bracket for runner

Can be installed at any location on the rail, to allow the installation of the different runners.

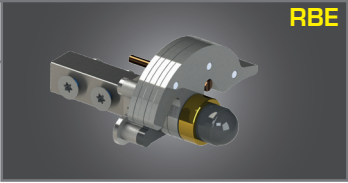
RR0



Retractable end stop

This end stop enables the runner to be fitted at the end of the rail. Automatic locking.

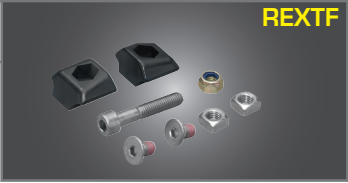
RBE



Fixed end stop

Blocks the runner at the end, securing the system. Finishes the extremity of the rail nicely.

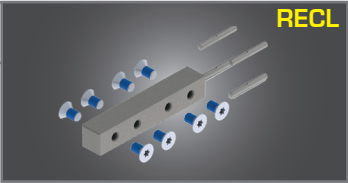
REXTF



Rail coupling block

Allows assembling two lengths of rail. The 4 pins ensure a perfect lining up of the rail.

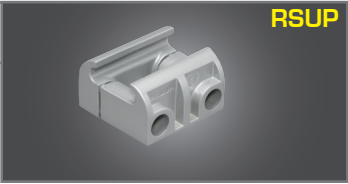
RECL



Rail support

Made of copper-aluminium, it facilitates the fitting and removal of the rail. Also permits free expansion of the rail.

RSUP



RAIG3D/RAIG4D



Switch

Allows a continuity of the movement, and the change of circulation of the runner. Available in 3 or 4 directions.

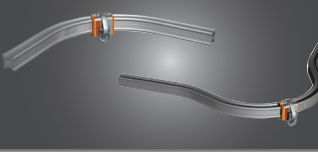
RAIG3DM/RAIG4DM



Motorized switch

Ensures the safety of warehouses with a significant height. Can be used and activated at distance with a remote control. Available in 3 or 4 directions.

RA90E/RA90S



90° angles for lateral movement

Interior or exterior angles allowing the runner to circulate sideways.

RA90S2/RA90E2



90° angles for overhead applications

Interior or exterior angles allowing the runner to circulate overhead.

REQG



Wall offset

Allows mounting the rail on a facade, when circulation is done overhead. Also available in stainless steel (Ref. REQI).



RPS

Safety sign

Must be installed at the access of the system. Allows the identification and the control of the secured area.